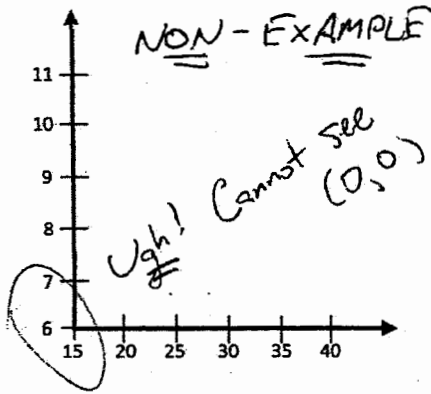
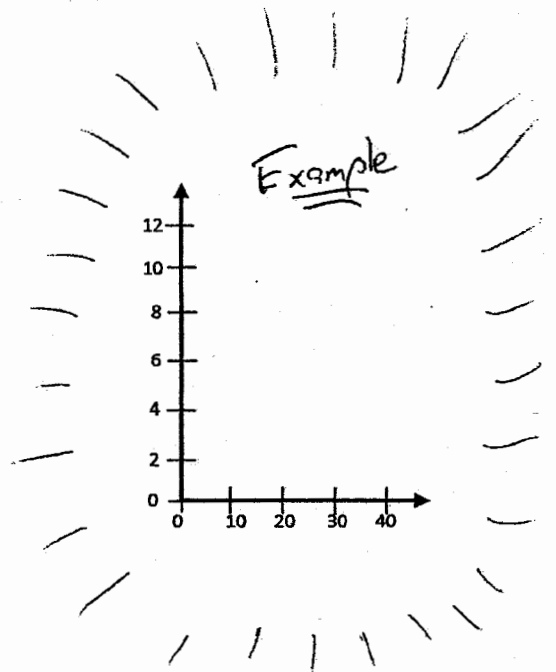
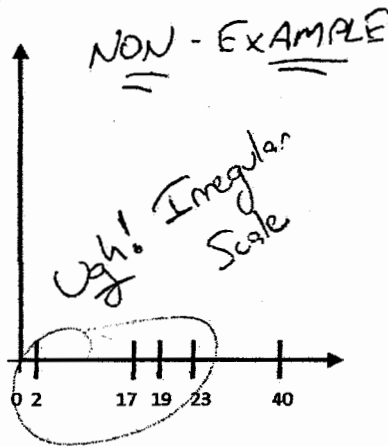


Graphing Guidelines

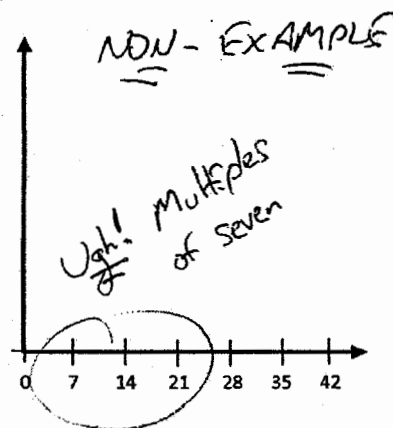
- Origin must be shown on graph



- Numbers on axes-- show uniform scaling

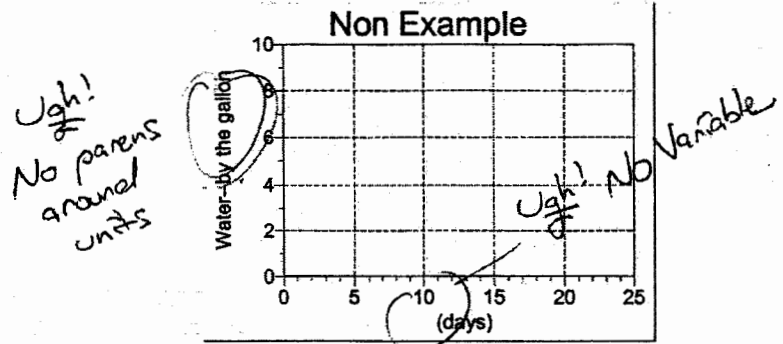
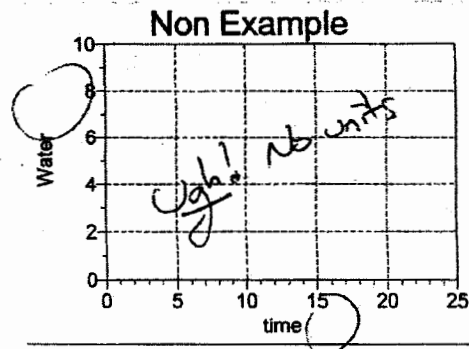


- choice of scale-- use multiples of 1, 2, 4, 5, or 10. avoid using multiples of 3, 6, 7



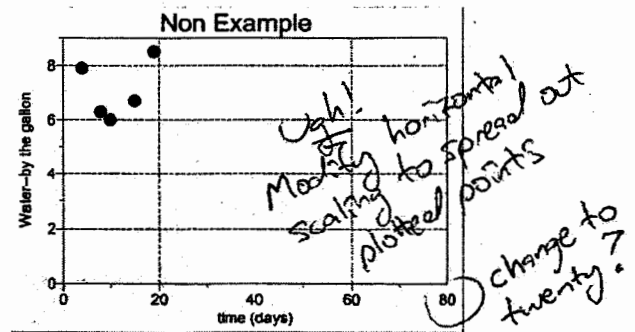
Labels--

- show variable name--
- show units in parentheses



Choice of scale--

- make sure your data is graphed as large as possible in the space you've been given.



Your turn! Use the data set below to create a graph that follows all guidelines...

time (days)	Water (gal)
4	7.9
8	6.3
10	6.0
15	6.7
19	8.5

